

**Objective:** NetMeeting-Share your Desktop

**Note:** Netmeeting must be installed previous to Initiating a Netmeeting. See Tutorial: Configuring NetMeeting for remote sharing and support.

**Step 1:** Enter the NetMeeting number given to you by CMETracker Support. Click on the Yellow telephone icon. Click on Tools. Click on Sharing from the dropdown. (Fig. A)

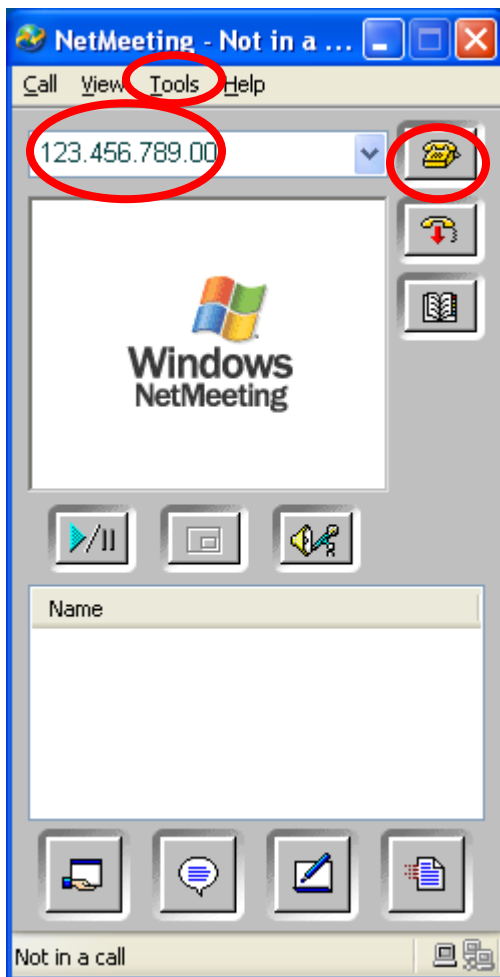
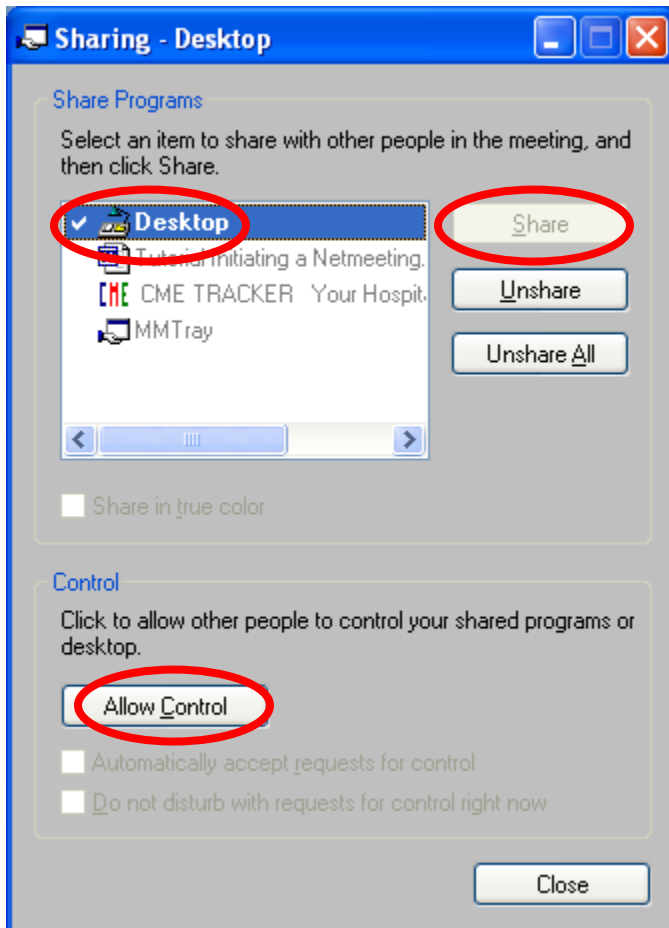


Fig. A

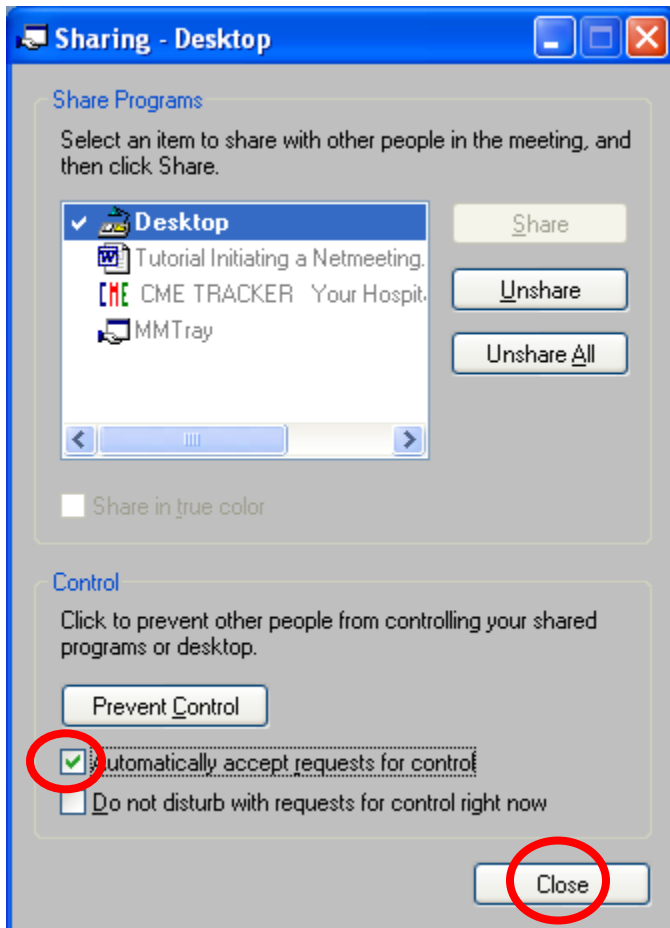
**Step 2:** Click to check on Desktop. Click on Share. Click on Allow Control.  
(Fig. B)

**Note:** Allow Control now becomes Prevent Control.



**Fig. B**

**Step 3:** Click to check Automatically accept requests for control. Click on Close. (Fig. C)



**Fig. C**

**Result:** Your Desktop is now being viewed by the CMETracker Support Team.



# Tutorial

